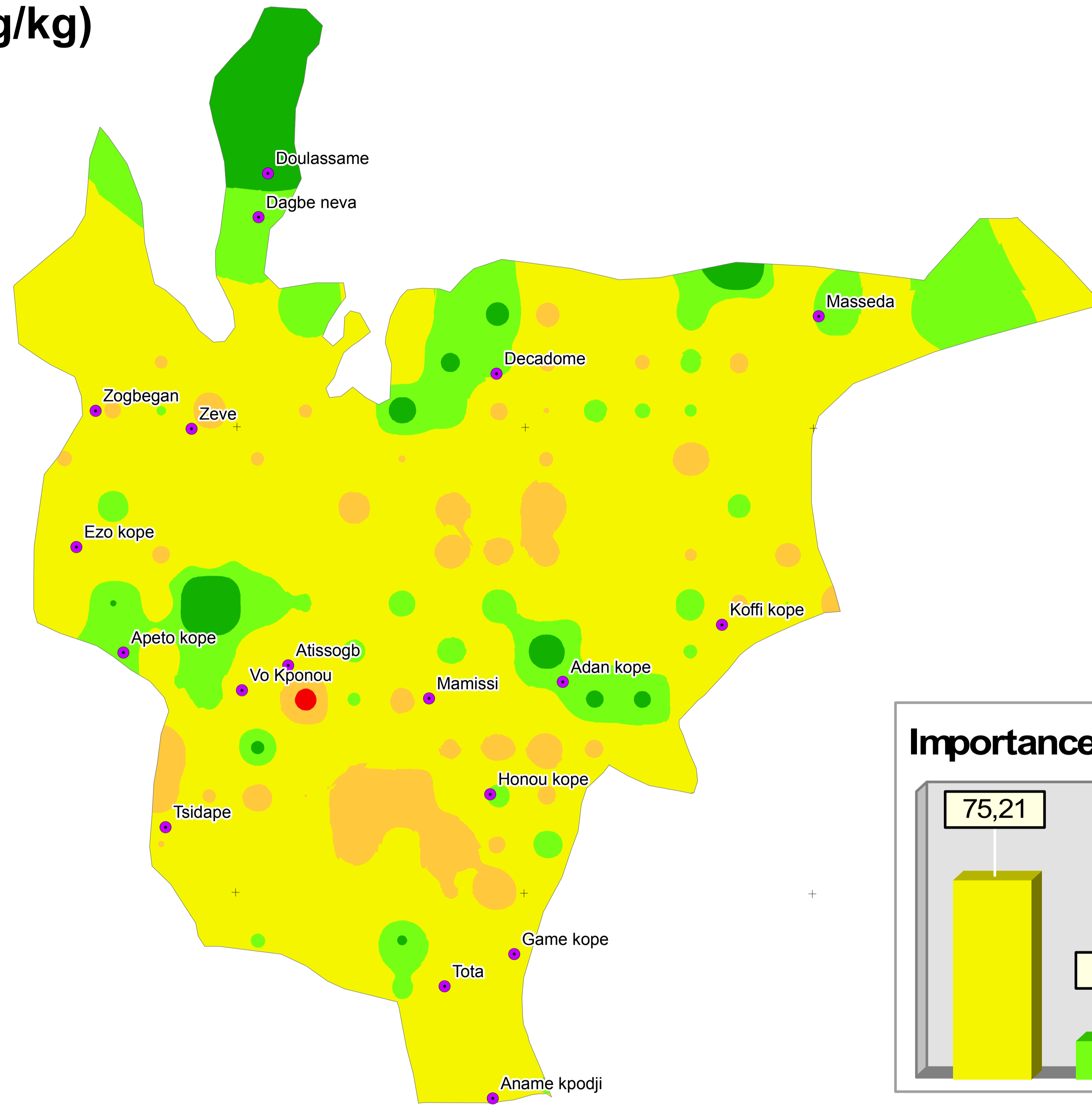
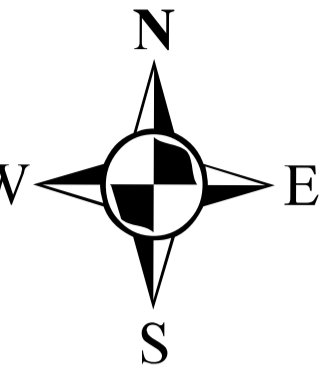
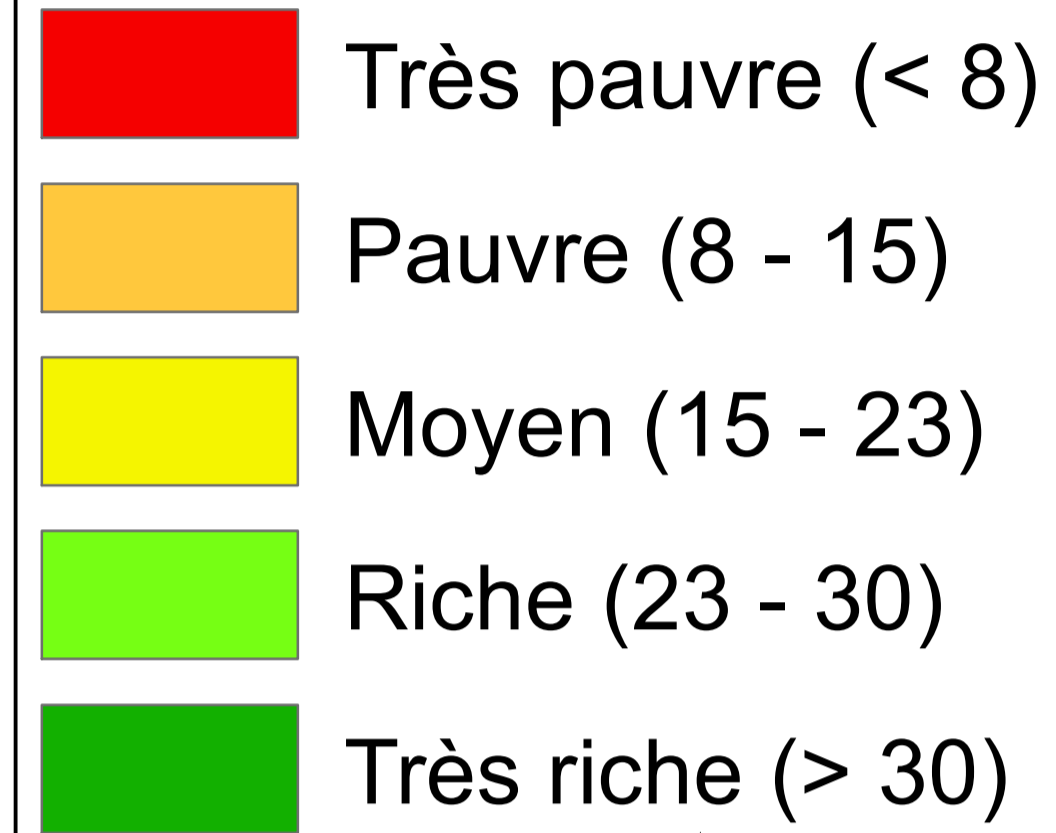


Carte de distribution spatiale du phosphore assimilable dans la zone pilote Maritime

1°27'30"E 1°30'45"E 1°34'0"E 1°37'15"E 1°40'30"E 1°43'45"E 1°47'0"E

Phosphore assimilable (mg/kg)

0 - 20 cm

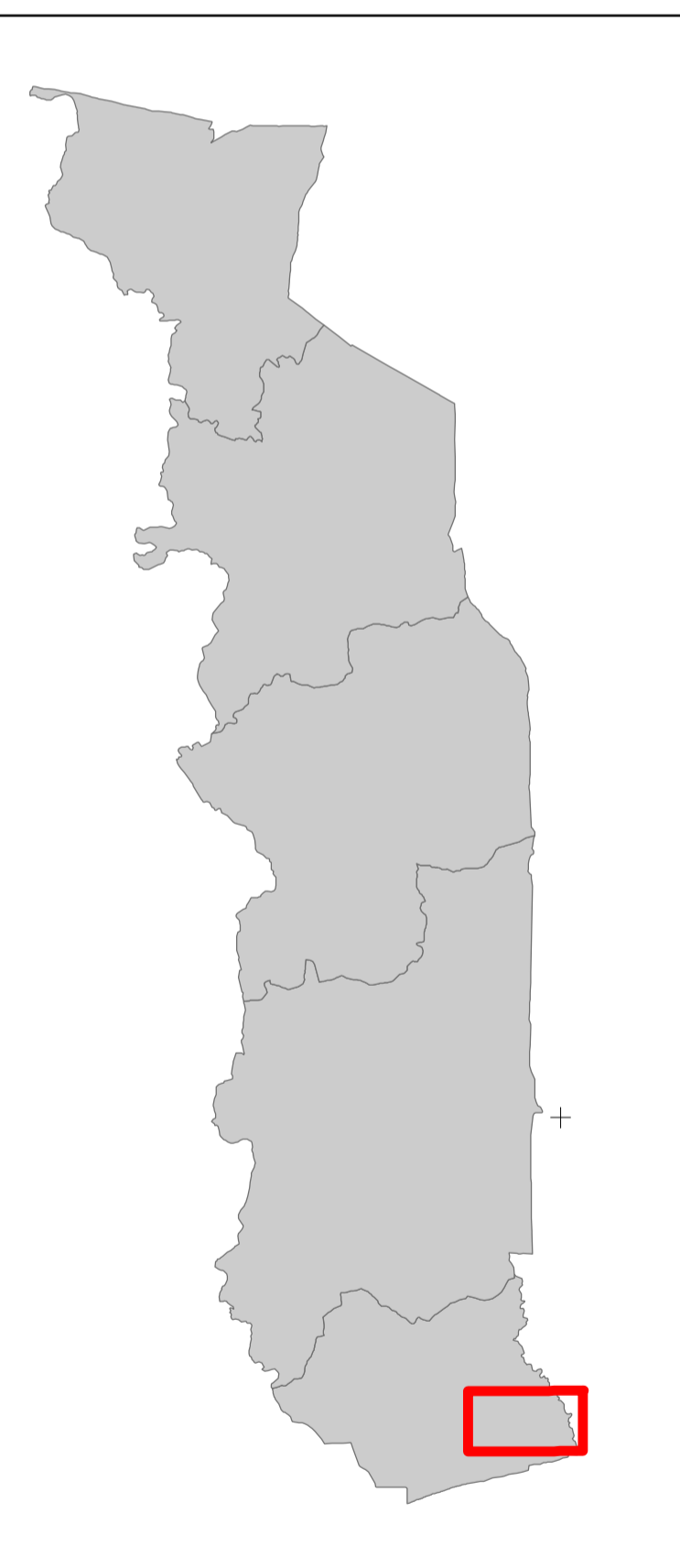


6°25'30"N

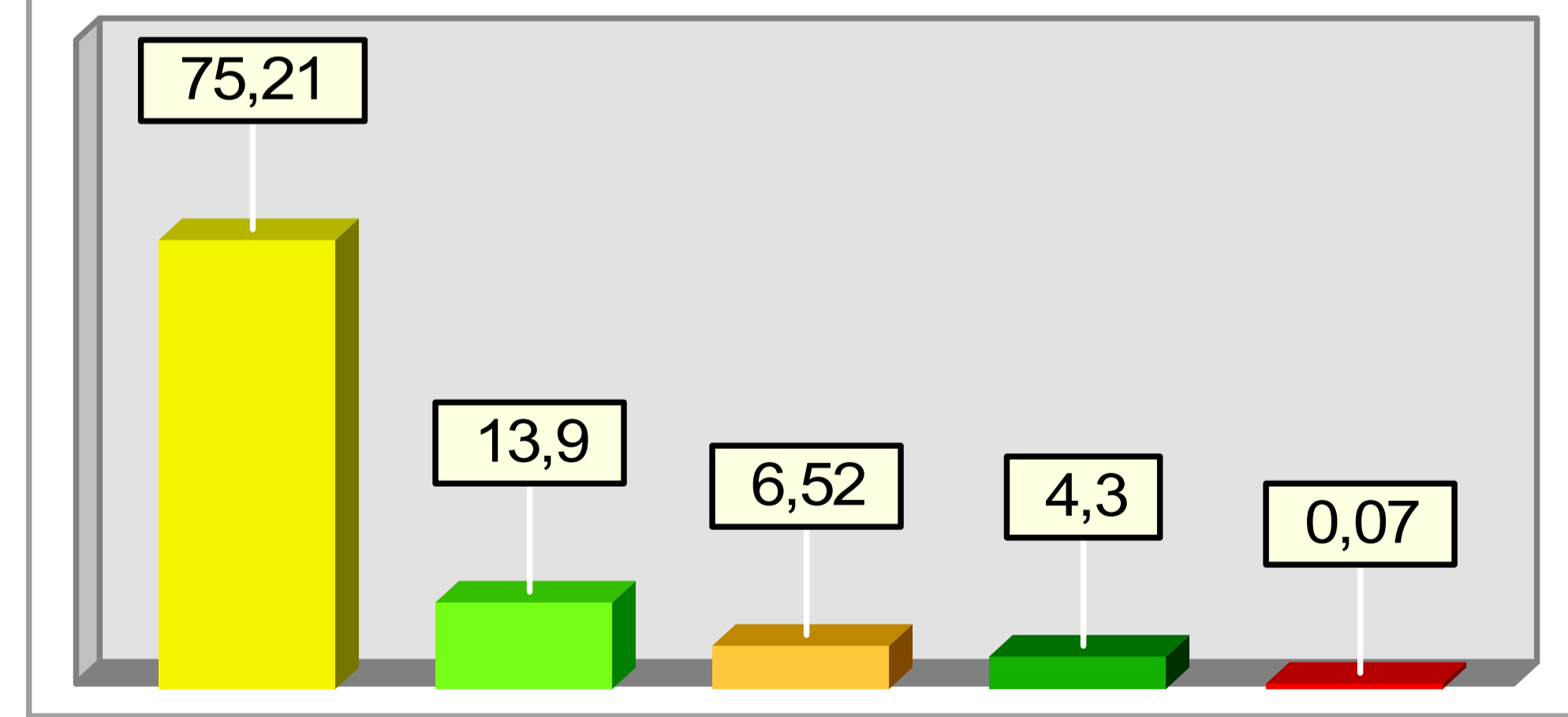
6°25'30"N

6°20'15"N

6°20'15"N



Importance relative des classes (%)



TKM

1°27'30"E 1°30'45"E 1°34'0"E 1°37'15"E 1°40'30"E 1°43'45"E 1°47'0"E



Projet de la cartographie de la fertilité des sols agricoles du Togo

