

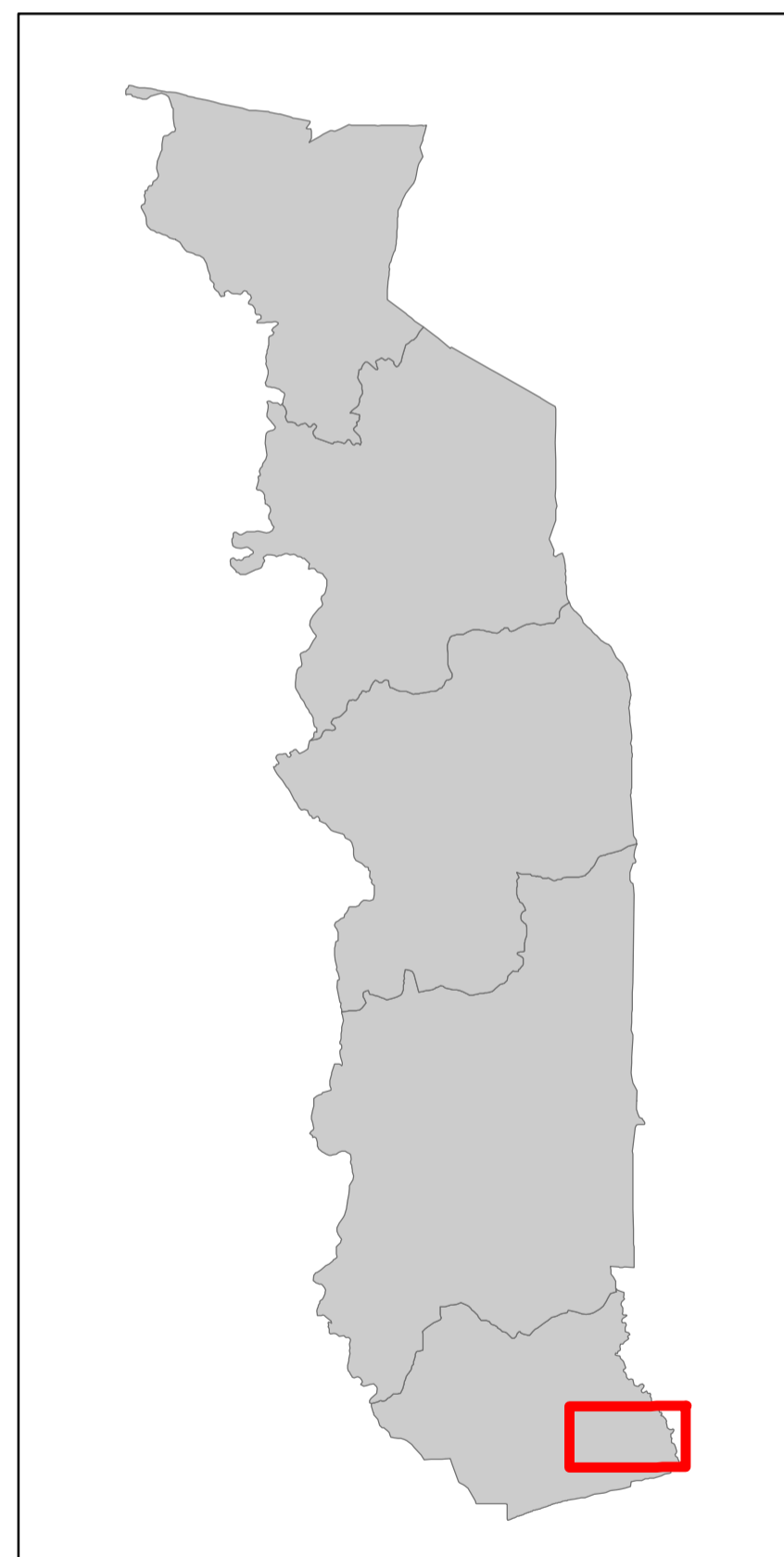
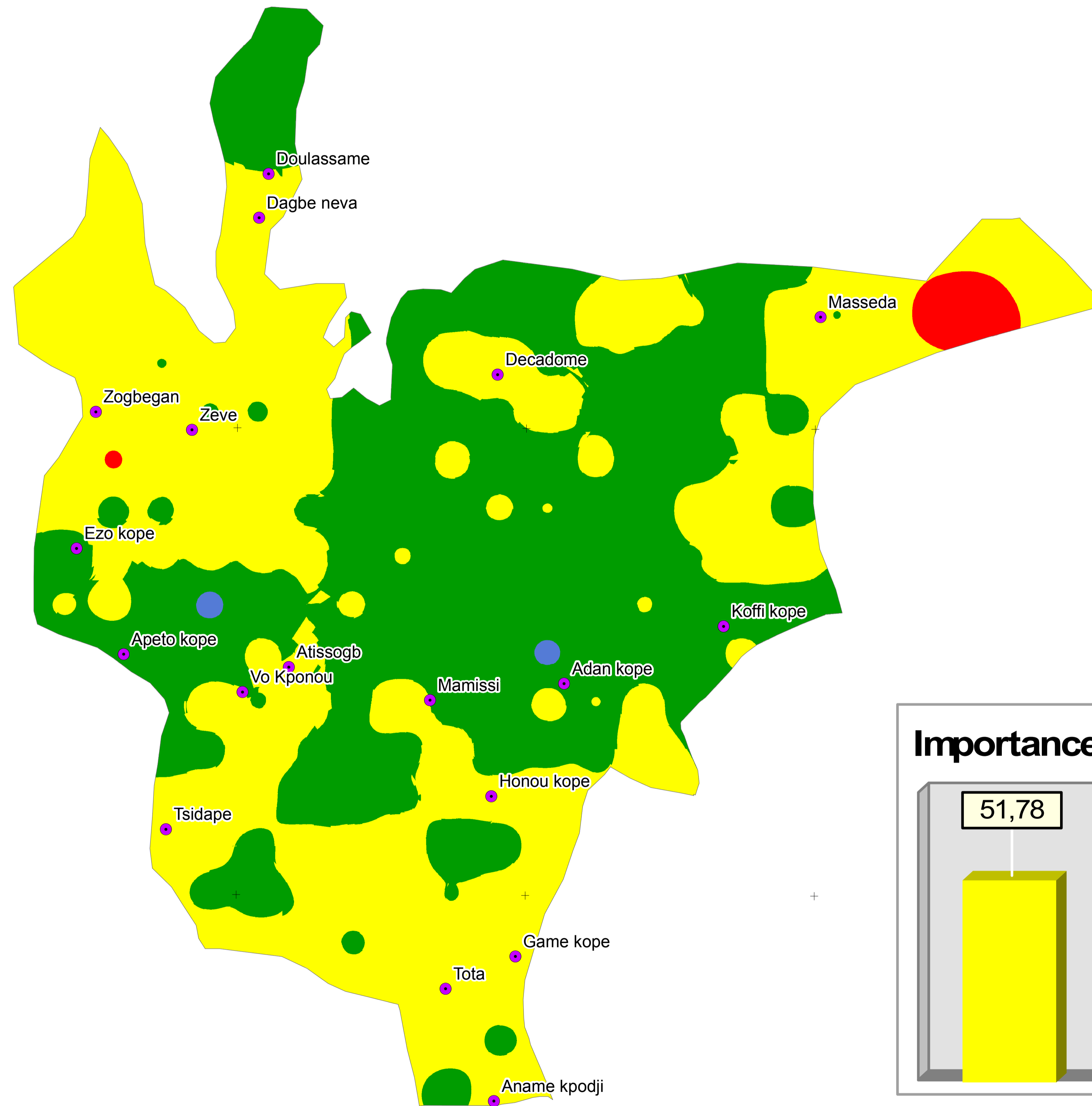
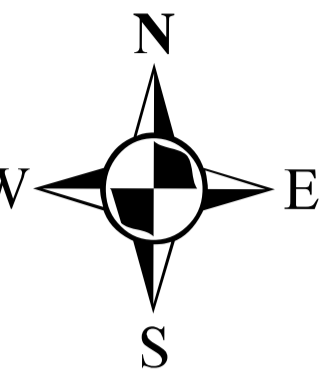
Carte de distribution spatiale du pH eau dans la zone pilote Maritime

1°27'30"E 1°30'45"E 1°34'0"E 1°37'15"E 1°40'30"E 1°43'45"E 1°47'0"E

pH eau

0 - 20 cm

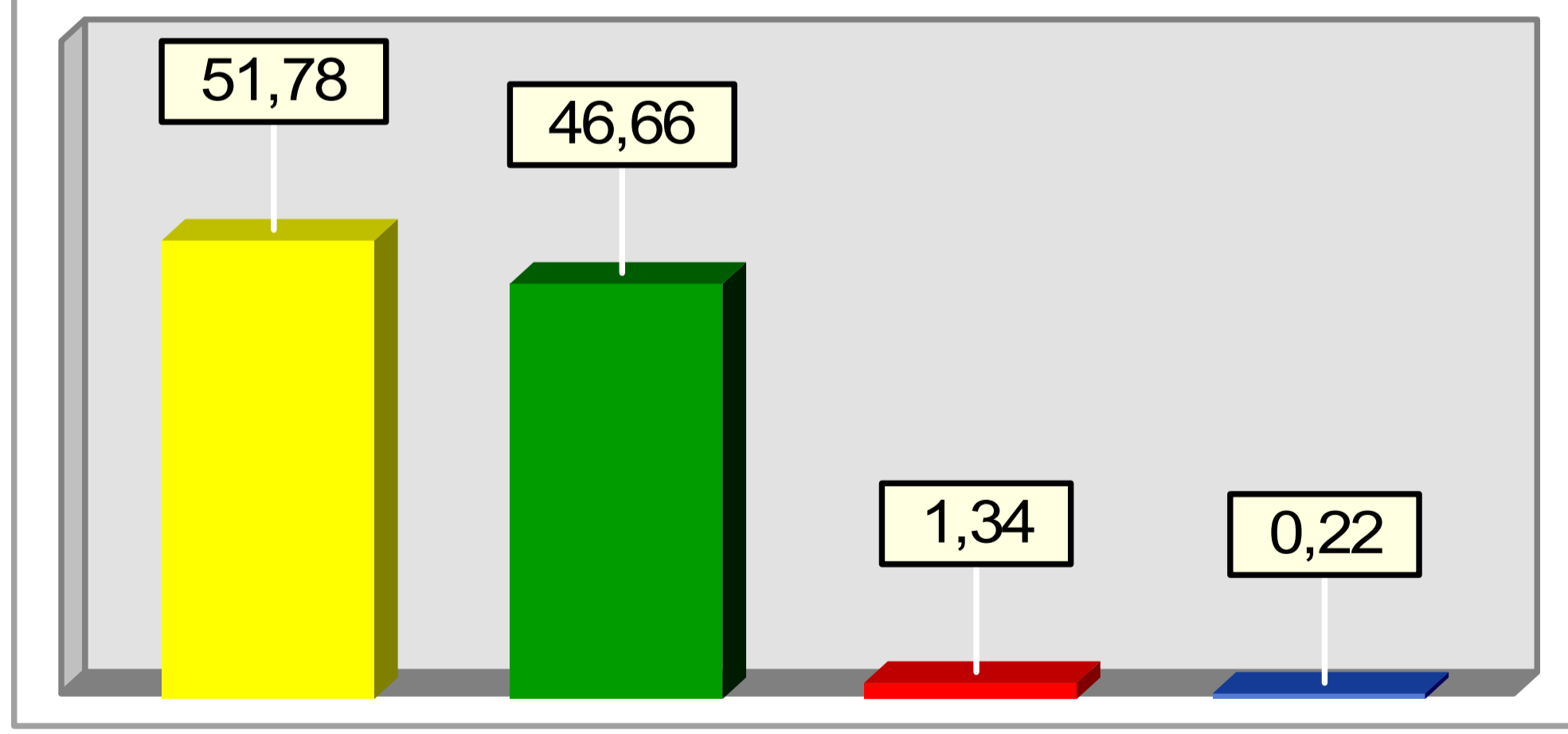
- Acide (< 5,5)
- Peu acide (5,5 - 6,5)
- Neutre (6,5 - 7,5)
- Peu alcalin (7,5 - 8,3)



3 1,5 0 3 Kilometers

1°27'30"E 1°30'45"E 1°34'0"E 1°37'15"E 1°40'30"E 1°43'45"E 1°47'0"E

Importance relative des classes (%)



Projet de la cartographie de la fertilité des sols agricoles du Togo

